

CORS management Tool

The CORS management Tool and the NTRIP is an easy and fully scalable way to manage your Base St stations and Broad Cast the differential data to your Rover / Clients. Manage your Clients, Collect RINEX data and distribute under a web interface.

The Software offers many ready to work functions that inform administrators for possible errors, disconnections and generic System failures. So your system is under continuous monitoring at all times.

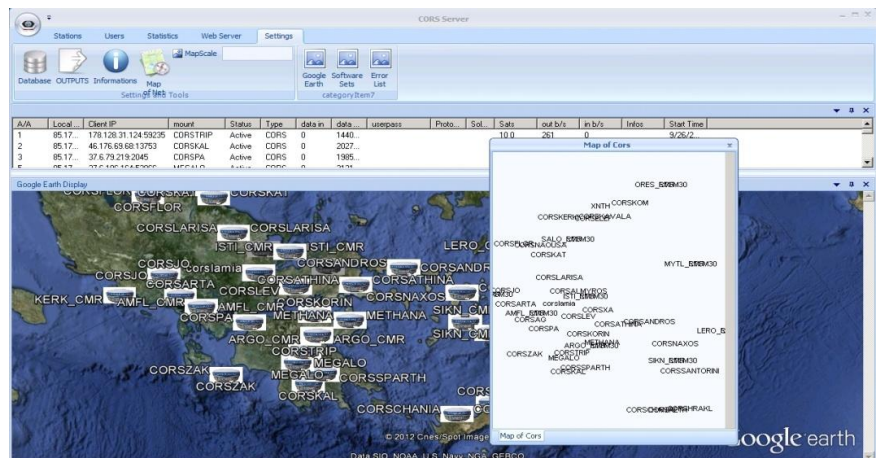
Some of the key features CMT: CORS management, NTRIP Caster, Client management, RINEX Distribution / collection
Embedded Web Server, Windows based Software.

CORS management features :

- Detect RTCM30/CMR protocols
- Monitoring (the duration of connections)
- Statistics
- Accept TCP/IP connections / Direct IP
- Email and SMS Alerts
- Post Processing check CORS stations positions
- Start Up all known GNSS receivers based CORS stations (NavCom , Septentrio, Novatel etc)

NTRIP Caster features :

- Nearest Base CMR/RTCM30
- Basic Password System
- Connection options : Time, monthly – date , and based restricted



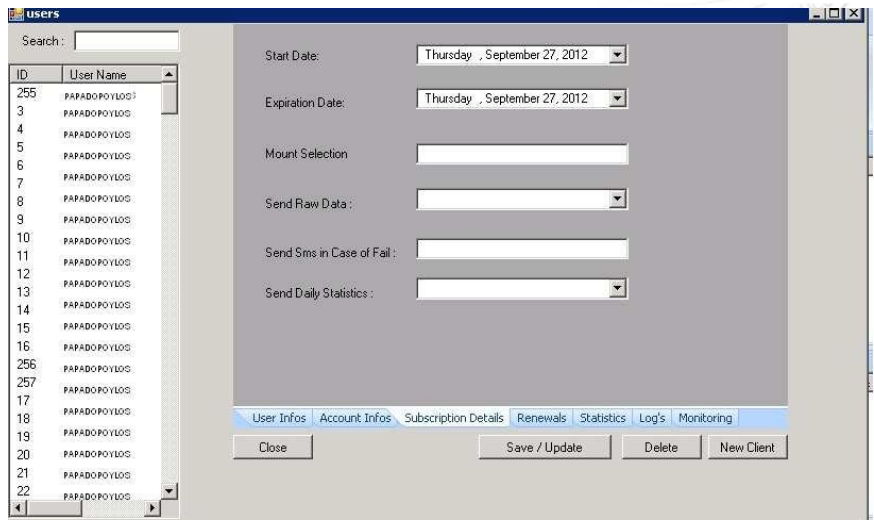
```
SOURCETABLE 200 OK
Server : Ntrip Caster CS 0.02 N
Date: 9/27/2012 10:05:36 AM
Connection: close
Content-Length: 8151Content-Type: text/plain
```

```
STR:CMR;CMR;CMR;L1(1)L2(1);2;GPS+GLONASS;Network;GRE;00.00;00.00;1;0;CivilShopRTK;none;B,N,9600;none;
STR:RTCM30;RTCM30;CMR;L1(1)L2(1);2;GPS+GLONASS;Network;GRE;00.00;00.00;1;0;CivilShopRTK;none;B,N,9600;none;
```



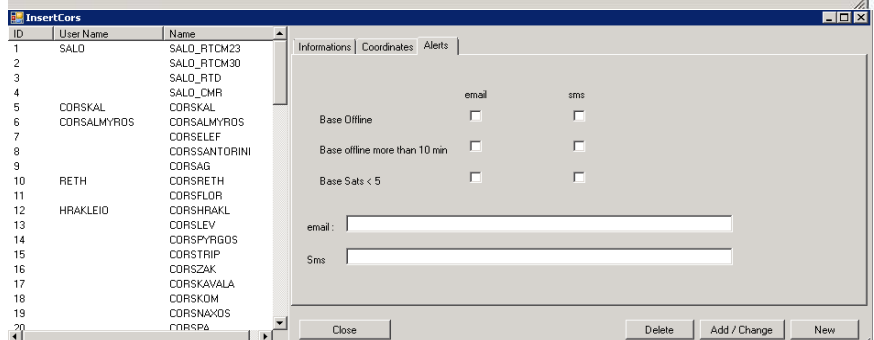
Client management

- Accounting
- Statistics
- Email/ SMS alerts
- Daily information
- Web Login for real time information



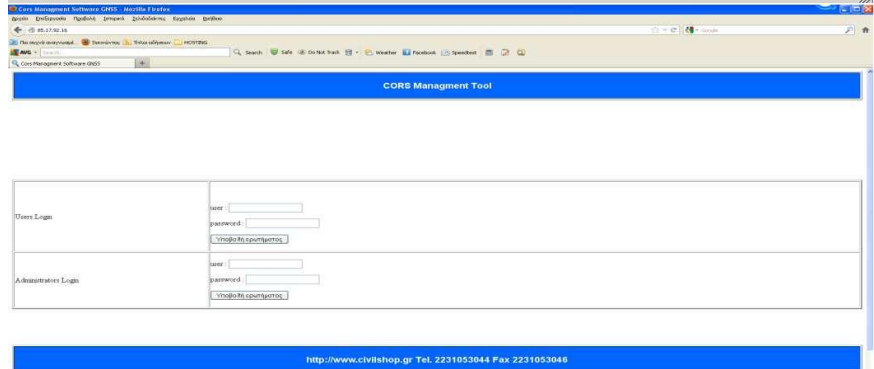
RINEX

- Converting RTCM30 to RINEX
- Distribute RINEX through Web interface



Web Interface :

- Admins/Clients password protected Login
- In formations about real time status
- RINEX order shop



Windows Based Software

- Easy to use interface
- Firebird SQL based
- Google Earth Display
- Ribbon interface



***1 year free upgrades**

*** Customization on clients demant**

